

# State of Wyoming Corner Record

(In compliance with the *CORNER PERPETUATION AND FILING ACT*, Wyoming Statutes, 1997 Section 33-29-140 et. seq., and the Rules and Regulations of the Board of Professional Engineers and Professional Land Surveyors)

Reverse side of this form may be used if more space is needed.

Record of original survey and citation of source of historical information (if corner is lost or obliterated). Description of corner monumentation evidence found and/or monument and accessories established to perpetuate the location of this corner. Sketch of relative location of monument, accessories, and reference points with course and distance to adjacent corner(s) (if determined in this survey). Method and rationale for reestablishment of lost or obliterated corner.

**LOCATION:** North Quarter of Section 8, T12N, R66W, 6th Principal Meridian, Laramie County.

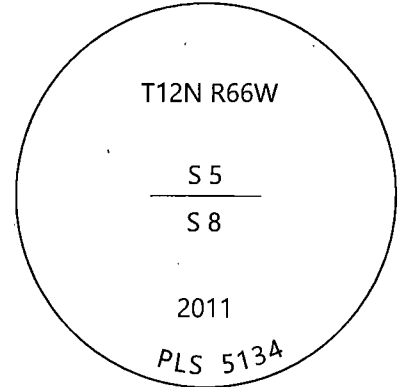
**RECORD:** GLO - Set a Boulder 14"x8"x8"

2010 - Randall Stelzner, LS 5134, found a 5/8" rebar with pink flagging south side of loose stone marked 1/4 on north side. Set a 2.5" aluminum cap on rebar, buried stone on south side of set monument. (Measured 2575.82' to the NE corner of Sec. 8, measured 2674.53' to the NW of Sec. 8)

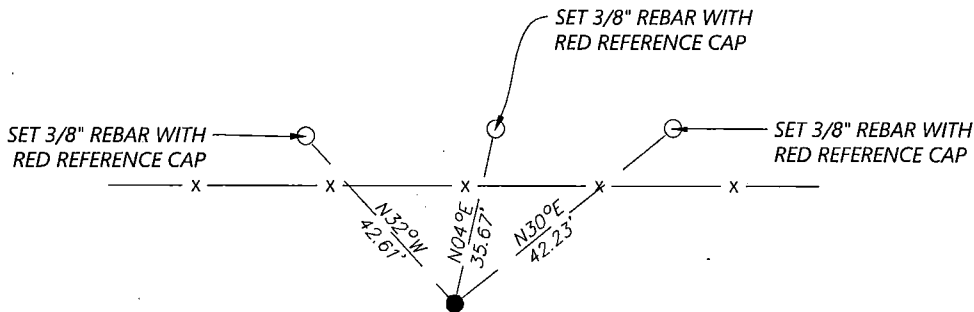
2015 - John Steil, LS 2500, completed a survey for Sec. 5 and found a 2" aluminum cap stamped "PLS 5134" for this corner. (Measured 2575.80' to the SE of Sec. 5, measured 2674.52' to the SW of Sec. 5)

**RECOVERED:** Westwood Professional Services recover the monument as shown on 2010 Stelzner record.

**RESET:** Accepted location of the monument as the correct location of the corner. Set additional ties as shown.



## Monument Inscription



Date of Field Work: 9/7/2019

Office Reference: 22237.00

### Cross Index Plat

	1	2	3	4	5	6	7	8	9	10	11	12	13	14	15	16	17	18	19	20	21	22	23	24	25		
A																											A
B																											B
C																											C
D																											D
E																											E
F																											F
G																											G
H																											H
J																											J
K																											K
L																											L
M																											M
N																											N
O																											O
P																											P
Q																											Q
R																											R
S																											S
T																											T
U																											U
V																											V
W																											W
X																											X
Y																											Y
Z																											Z
	1	2	3	4	5	6	7	8	9	10	11	12	13	14	15	16	17	18	19	20	21	22	23	24	25		

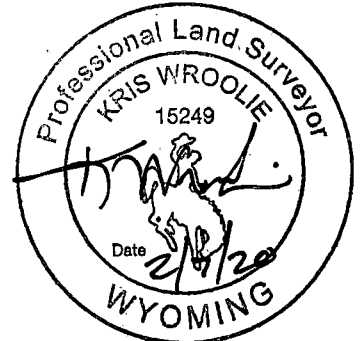
Firm/Agency, Address

Westwood Professional Services  
 3701 12th St. N. Ste. 206  
 St. Cloud, MN 56303

This corner record was prepared by me or under my direction and supervision.

SEAL & SIGNATURE

Telephone Number: (320)-253-9495



REC # : 771562  
 RECORDED 2/13/2020 AT 10:16 AM BK# 2659 PG# 938  
 Debra K. Lee, CLERK OF LARAMIE COUNTY, WY PAGE 1 OF 1

Corner Name North Quarter Section 8, T 12 N, R 66 W, 6th P.M.

Cross-Index No.: E-7

County: Laramie Wyoming

SBRPEPLS/PLSW: March 1994; PLSW January 1998